

## General Data

Total Area (sq. km): 307,236 | Population: 36,753,736  
 Baltic Sea Region: Yes | State Structure: National  
 TEN-T Corridors: North Sea - Baltic, , Baltic Sea - Adriatic Sea, Baltic Sea - Black Sea - Aegean Sea

## Combined Transport (CT) Stakeholders



**111**  
CT-Operators



**36** Continental CT Terminals  
**25** Terminal Operators

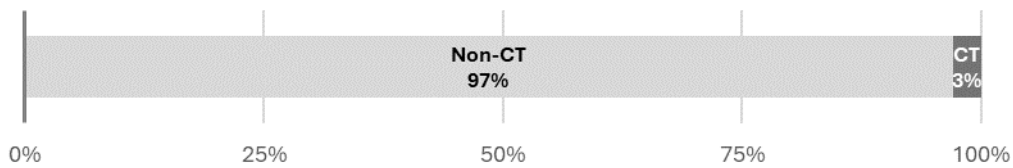


**127**  
Railway Undertakings



**1** Infrastructure Manager  
PKP PLK  
www.plk-sa.pl

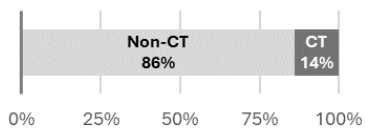
Share of Combined Transport (CT) and Non-Combined Transport (road, rail, inland navigation) in total freight transport performance (2022)



### Rail Performance

Total goods transported (2022)  
**59,031 M tkm**

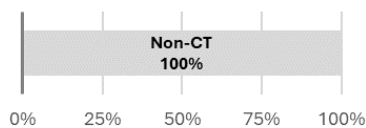
Share of Combined Transport (CT) and Non-Combined Transport in total rail freight transport performance (2022)



### IW\* Performance

Total goods transported (2022)  
**40 M tkm**

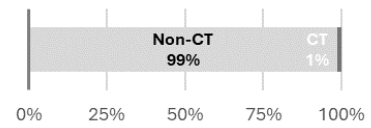
Share of Combined Transport (CT) and Non-Combined Transport in the total freight transport performance of inland navigation (2022)



### Road Performance

Total goods transported (2022)  
**385,089 M tkm**

Share of Combined Transport (CT) and Non-Combined Transport in total road freight transport performance (2022)



Performance Data: Eurostat, for all other sources of this country sheet please refer to the database

\*IW: Inland Waterway



## Transport Ministry and Cabinet

Ministry  
Contact

Ministerstwo Infrastruktury (Ministry of Infrastructure) | [Weblink](#)  
Arkadiusz, Marchewka, State Secretary, SekretariatAMarchewki@mi.gov.pl

Cabinet  
Contact

Departament Kolejnictwa (DTK) (Department of Railways)  
Tomasz, Warsza, Director, Department of Railways (DTK), sekretariatDTK@mi.gov.pl



### National Authorities

Regulatory Agency	Office for Rail Transport
Contacts	Alicja Kozłowska, Director Department of Market Regulation, <a href="mailto:utk@utk.gov.pl">utk@utk.gov.pl</a>
Accident Investigating Body	Państwowa Komisja Badania Wypadków Kolejowych-State Commission on Rail Accident Investigation
Competencies	Rail
Contacts	Rafał Lesniowski, NIB Deputy Chairman, <a href="mailto:rafal.lesniowski@mswia.gov.pl">rafal.lesniowski@mswia.gov.pl</a> , <a href="mailto:pkbkw@mswia.gov.pl">pkbkw@mswia.gov.pl</a>



### National Freight Transport Plan / Strategy

- 1 National Railway Program | [Weblink](#)
- 2 Sustainable Transport Development Strategy until 2030 | [Weblink](#)



### Rail: Key Figures

Gauge | **Standard/Broad (1,435/1,520 mm)**

Electrification | **3 kV DC; 25 kV AC (some lines)**

ERTMS current ETCS in operation (%) according to data available until March 2023 | **18**

ERTMS length to be equipped by 2030 (km) | **4,526**

Length of network in Km (2022) | **19,355**

Single track lines % (2022) | **54**

Average track Access charges for the Minimum Access Package from RUs (freight) (€/trainKm, 2021) | **2.84**



### Road: Key Figures

Weight per non-drive/drive axle (t) | **10/11.5**

Max. weight (t) | **40**

Max. length road trains (m) | **18.75**

Max. length articulated vehicles (m) | **16.5**

Max. height (m) | **4**, Max. width (m) | **2.55**

Long/high-capacity vehicle authorization | **no**

Length of Motorways, main or national Roads, secondary or regional roads (km, 2020) | **173,063**

Maut - charging of heavy goods vehicles in EU | **yes**



### Combined Transport Support Measures

Quality of railroad network (1: Low, 7: High) | **3.9**

Axle load (t) | **22.5**

Electrification of Last miles (Y/N) | **Y**

Max length trains (m) | **740m in certain corridor lines**

National rules - authorisation (ERADIS) (Y/N) | **Y**

Codification of lines (Semi-trailer/Swap body) | **P70/400, P75/405, P47/377, P47/360, P50/380, C77/407, C70/400**

Exemption - Ban of circulation road in CT (Y/N) | **Y**

Exemptions – Maut (Y/N) | **N**

Others | **Programme: Directions of development of intermodal transport** | [Weblink](#)

Financial Measures | **It could be that there is no current programme in terms of the search criteria used here. Other (regional) funding opportunities may exist, Considerations are pending - Recommendations regarding the introduction of a new intermodal transport support system** | [Weblink](#)